



DURGA MACHTECH PVT.LTD

Durga Machtech Pvt.Ltd
HOUSE OF ENGINEERING EXCELLENCE



About Durga Machtech Pvt.Ltd



OUR STORY



MISSION



PRODUCTS AND
SERVICES



MILESTONES



KEY
ACHIEVEMENTS



Our Story

- How did we get started?
- *The company was established by Mr. Bhagwant Channevadkar in 1993 in a small 500sqft area with a conventional lathe machine.*
- What is memorable about our heritage?
- *The journey we accomplished and how well we have expanded our facilities and services so that we could be of more help to our customer.*

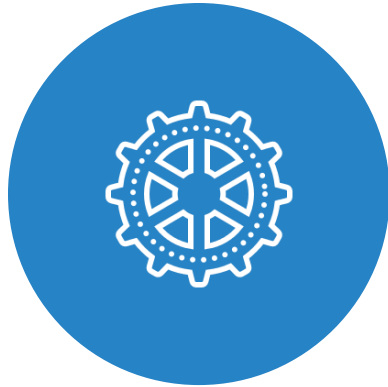
Mission

- Our mission is to expand and continuously improve ourselves by utilizing quality practices, safety practices and employee involvement to manufacture goods for both domestic and international markets, by being the one stop solution for every customer.





Our Products and Services



MACHINING



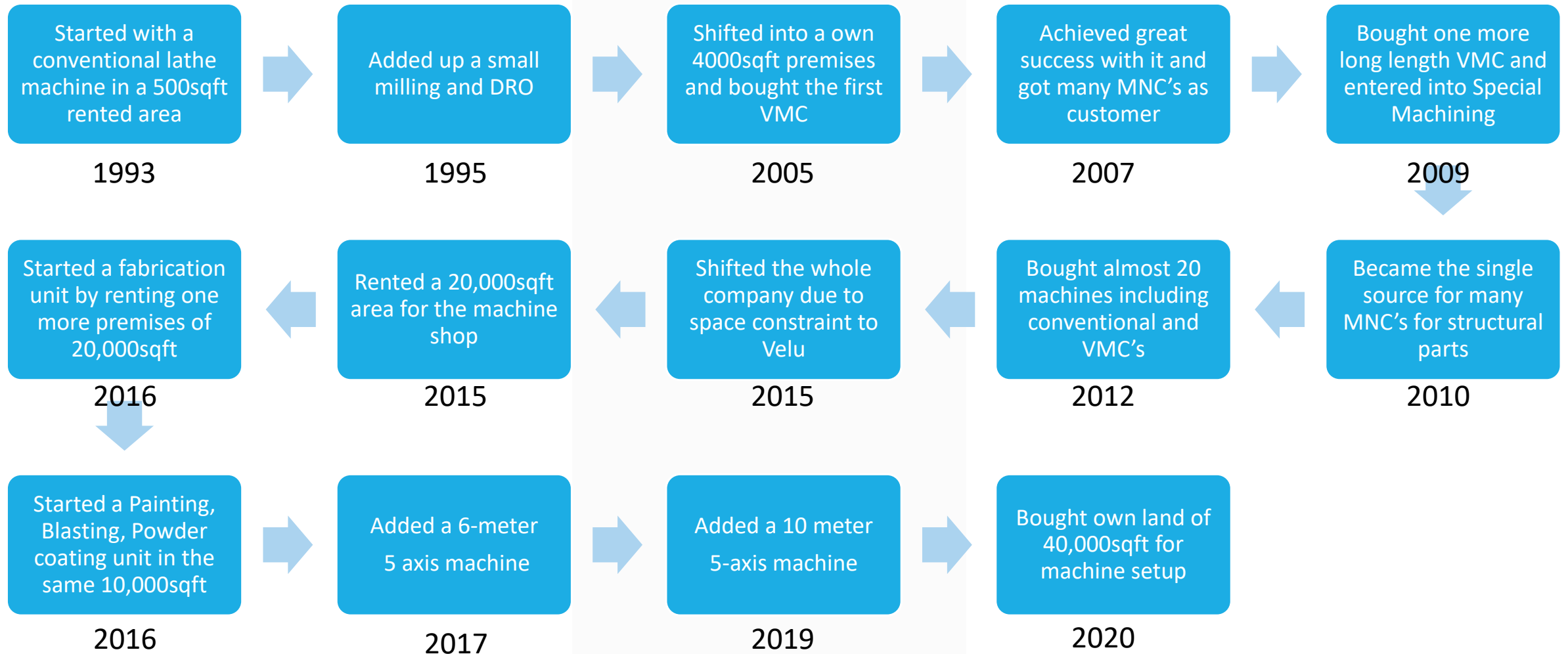
FABRICATION



PAINTING



MILESTONES



Key Achievements

We have worked for the government as official vendors and also as third party vendors, with them we have also worked for many National and International Companies

- BOBST
- ACG PAMPAC
- B&W MEGTEC
- THYSSENKRUP
- JBT GROUP
- WIPRO PARI





 **BOBST**

Valmet 

Metso:Outotec

B&W
MEGTEC


thyssenkrupp

ACG
pampac[®]

 **JBT** Corporation

 **wipro**  **PARI**

3M



ISO Certified Company

We are Certified for
Fabrication, Machining and
Sub-Assemblies.

CERTIFICATE

Management system as per
ISO 9001 : 2015

In accordance with TÜV INDIA procedures, it is hereby certified that

DURGA MACHTECH PVT. LTD.
Milkat No. 950, Velu Phata, Pune- Satara Road,
Velu, Tal- Bhor, Pune - 412 205,
Maharashtra,
India
and other location as per annexure

applies a management system in line with the above standard for the following scope

Manufacture and Supply of Fabricated, Precision Machined Metal Components & Sub-Assemblies.

Certificate Registration No. **QM 03 02516**
Audit Report No. **Q 9534/2019**

Valid until **29.06.2022**


Certification Body
at TÜV INDIA PVT. LTD.

Issue **30.06.2019**
Place : **Mumbai**

This certification was conducted in accordance with the TÜV INDIA auditing and certification procedures & shall be valid subject to regular Surveillance Audits.

TÜV India Pvt. Ltd., 801, Raheja Plaza – 1, L.B.S. Marg, Ghatkopar (W), Mumbai - 400 086, India cert_helpdesk@tuvindia.co.in





DURGA MACHTECH PVT. LTD

- Durga Machtech Pvt. Ltd is our new plant located at Shivare on Pune-Satara Highway, Tal. Bhor, Dist. Pune ,Maharashtra , India-412205.
- The shed is 110 meters in length 23 meters in width and the height is 13meters and the crane hook height is 9 meters. The total shop floor area into use is 40,000 sqft .
- The roof of the company is installed with a 185 kW power generating solar panels, and also practices rain water harvesting which makes it a green plant.
- This 40,000 sqft facility includes:-
 - i. Zayer FPU-10,000 (5-axis machine)
 - ii. Zayer KFU-4000(5-axis machine)
 - iii. Zayer CNC Milling 4000
 - iv. Haas VF-10





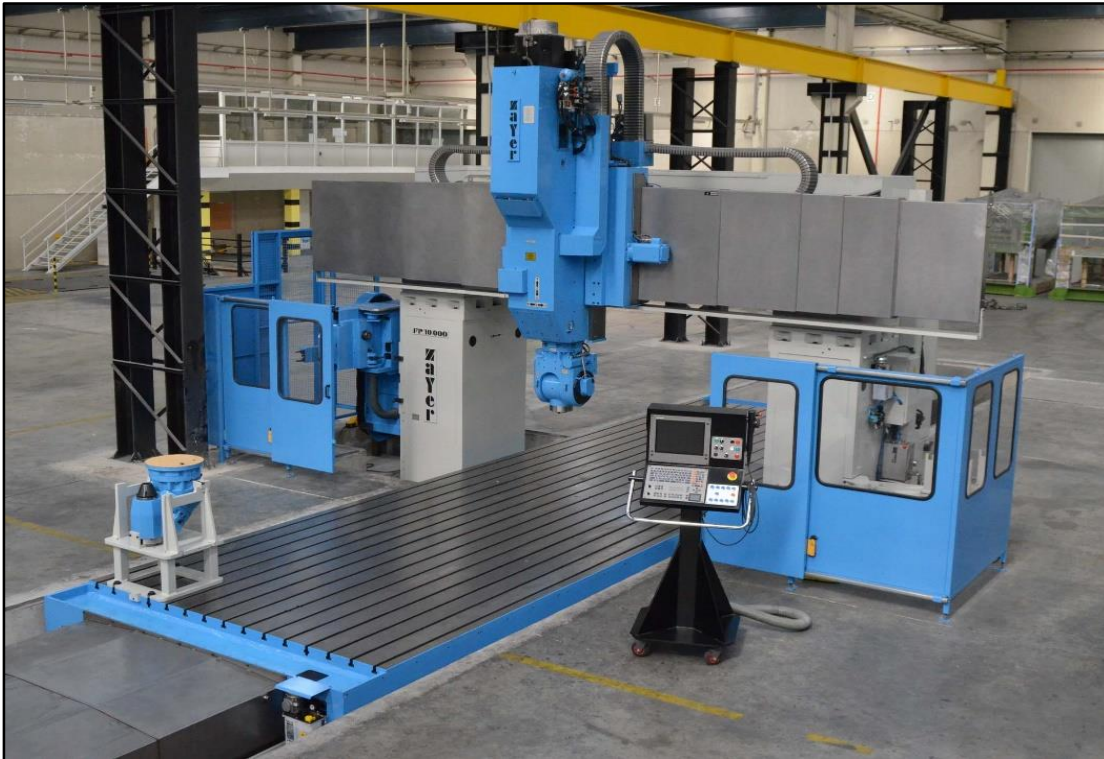
DURGA MACHTECH PVT.LTD

- 185 kW Solar Power Plant
(Green Energy Certified Plant)
- The vision is to generate and utilize maximum of the solar energy and contribute towards the environment as much as possible.
- We even have put pipes and the rainwater collected is harvested by dispensing it into ground so that it increases the ground water level.





MACHINES AT DURGA MACHTECH PVT. LTD



➤ Zayer FPU-10000

- X=10,000mm
- Y=2600mm
- Z=1150mm
- 5 Axis Head Rotation with 0.001 Degree.



➤ Zayer KFU-4000

- X=3700mm
- Y=900mm
- Z=1000mm
- 4th Axis M/c with 5 degree rotating head.



MACHINES AT DURGA MACHTECH PVT. LTD



➤ HARTFORD HF-6

- X axis- 6000mm
- Y axis-2300mm
- Z axis-1000mm
- With Horizontal and Universal Head with 1 degree rotation.



➤ HARTFORD HF-3

- X axis- 3250mm
- Y axis-1600mm
- Z axis-780mm
- With Horizontal Head.



MACHINES AT DURGA MACHTECH PVT. LTD



➤ Zayer CNC MILLING-4000

- X=3600mm
- Y=550mm
- Z=850mm
- 3 axis milling machine.



➤ HAAS VF-10

- X=3050mm
- Y=710mm
- Z=700mm
- 3 axis machine



QUALITY EQUIPMENTS



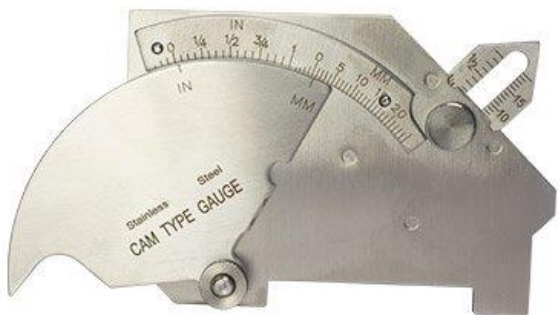
LUTHRA SURFACE TABLE 2M X 2M



BORE GAUGES



VERNIER CALIPERS



WELDING GAUGES



TAPPING GAUGES

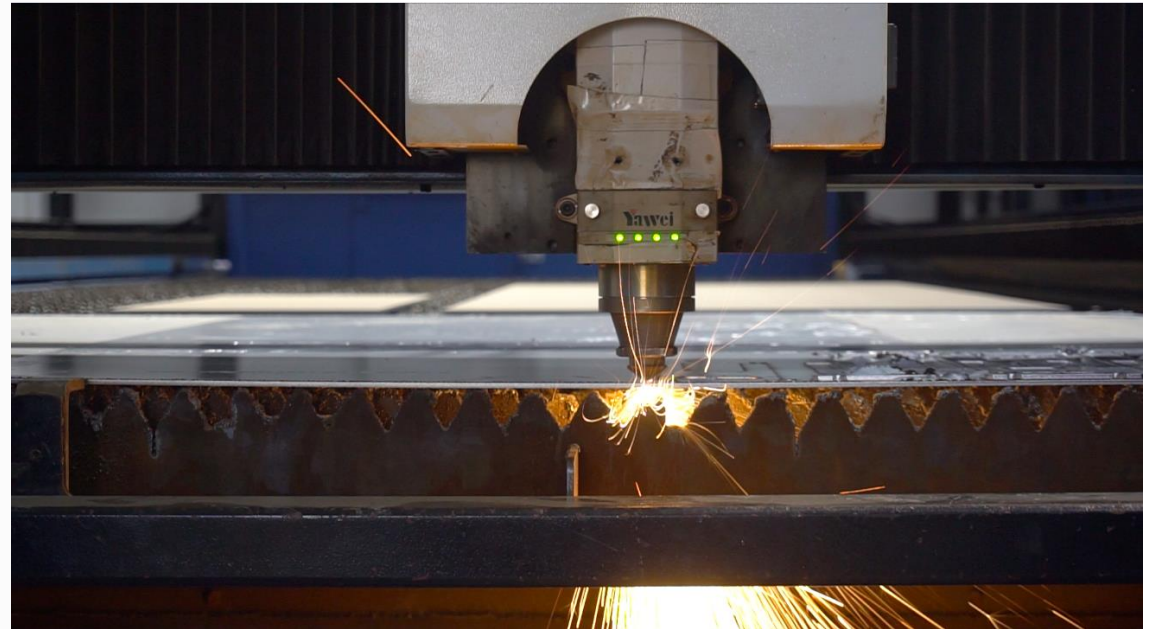


TRIMOS 1 METER



FABRICATION UNIT

- Fabrication Unit is a one-stop solution for cutting, bending and heavy fabrication.
- This 20,000sqft Facility Includes:
 - i. Plasma Cutting Machine.
 - ii. Laser Cutting Machine.
 - iii. Bending Machine.
 - iv. Bend-Saw Cutting Machine.
 - v. Welding Machines (TIG/MIG).
 - vi. Daimler Tables.





FABRICATION UNIT





FABRICATION UNIT





FABRICATION UNIT



LASER CUTTING MACHINE

Max. Cutting Width:-2000mm
Max. Cutting Length:-6000mm
3 KVa Machine



PLASMA CUTTING MACHINE

Max. Cutting Width:-3000mm
Max. Cutting Length:-8000mm



HYDRAULIC BENDING MACHINE (600 TON)

Max. Bending Length:- 6000mm



FABRICATION UNIT



ESAB MIG WELDING MACHINES



ESAB TIG WELDING MACHINES

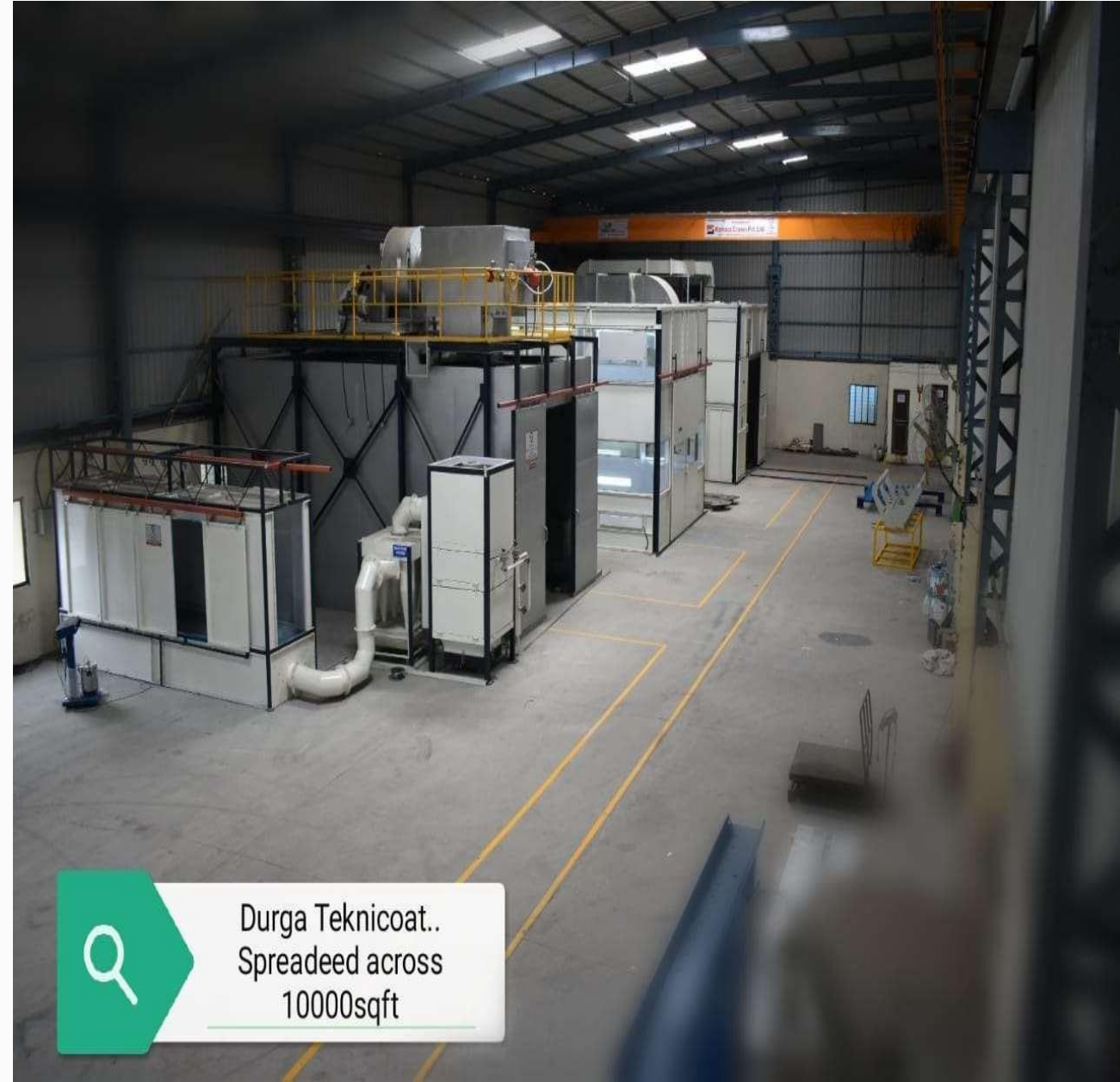


DAIMLER TABLES



PAINTING UNIT

- Painting unit is involved into high quality painting, shot blasting, powder coating.
- This 10,000 sqft. Facility includes:
 - i. Shot Blasting Booth.
 - ii. Down Draft Paint Booth.
 - iii. Powder Coating Booth.
 - iv. Paint Drying Oven.



Durga Teknicoat..
Spreaded across
10000sqft



PAINTING UNIT





Safety Features of Cable Tray Recovery System

Technical Specifications

1. Blast Room Enclosures

- ❑ MS wall Construction.
- ❑ Size – 10 x 5 x 4.5 – LWH, M



2. Bucket Elevator & Media Separator

- ❑ The abrasive conveyed into the boot of the bucket elevator is elevated by the buckets to the top where it enters the media separation unit.
- ❑ The Media separator unit is an air wash separator, which receives all the media and debris from blasted work piece by the bucket elevator.



3. Main Door-Hinge Type with Air Louvers



4. Dust Collector Cartridge System

- ❑ Dust laden air from blast room is sucked into the dust Collector due to vacuum created by exhaust fan.
- ❑ The fine dust is collected in the Pleated cartridge type dust Collector.
- ❑ Capacity Required – 10000 m³ / hr – 2 Sets



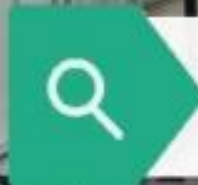
5. Single Screw Media Recovery System -Screw Conveyor Type

- ❑ Suitable Screw Conveyor hopper is provided at the center of the room to facilitate conveying of abrasive media to screw conveyor.
- ❑ Suitable hopper grating for screw conveyor hopper is provided to facilitate transferring of used abrasive into screw conveyor hopper.





PAINTING UNIT



Down Draft Paint Booth.
Size - 10mtr x 5mtr



PAINTING BOOTH – DOWN DRAFT TYPE – DRY TYPE

- ❑ Non Pressurized Dry type Down Draft Spray Booth.
- ❑ Here also component carried with the help of Gantry and placed on the trolley and then it will enter to painting area.
- ❑ Entry exit door (Common) – Manual operated sliding door.
- ❑ Floor is covered with metal grating over exhaust pit.
- ❑ Paint arrestor filters are provided in the length wise civil pits at the bottom.

Technical Specifications

Booth Enclosure.	Booth
Length (M)	8.0
Clear Width (M)	5.0
Clear Height (M)	4.5
Air Down Draft (m/sec)	0.50
Exhaust Blower (m cub/H)	2X36000
Illumination (Lux)	800



PAINTING UNIT



Powder Coating Booth.
Size - 6 mtr x 1.5mtr

Technical Specifications Of Powder Coating Booth



Sr. No.	Specifications	Unit	Powder Coating Booth
A	Type of Booth		Closed enclosure- with Cyclone Recovery
B	Working Dimensions.	M	6 x 1.2 x 2.3, LWH
C	Blowers		
	Capacity Of Blower	M3/Hr.	1 x 4000
D	Mono Cyclone		
	Mono Cyclones On Each Set	No.	1.0
	No of Sets Of Mono cyclone	No.	1
E	Capacity Of Blower	M3/Hr.	1 X 4000
	Cartridge Filters		
	No of Cartridges on each set	-	4
	No of sets of Cartridges	-	1
F	Capacity Of Each Cartridge	M3/Hr.	1000
	Illumination		
	Tube light 2x40w	Nos.	4.0
	Lighting Fixture	-	Dust proof, Hinged
	Fluorescent Tubes	-	NonFlame Proof
G	Mounting	-	On Structural Frame.
	Painting For MS surface		Inside Two Coats Of Epoxy
			Outer- Surface primer + Synthetic Enamel White Paint.



PAINTING UNIT



Baking Oven With TTR
Size - 8mtr x 4mtr

Technical Specifications of Oven



Description	Unit	Oven
Tack Time	Min	30.0
Panel MOC	-	GI
Panel thickness	Mm	1.25
Insulation thickness	Mm	200
Heating system.	-	Direct Gas Fired
MOC Of Combustion Chamber		SS 3043 thk
Heating medium	-	LPG
Length oven	M	7.4
Air temp.	°C	220
Total active time	Min	30.0
Oven heat-up time max (From cold state).	min	20.0
Oven width	M	4.1
Oven height	M	3.75
HeatUp zone		
Initial heatload	Kcal/Hr	1,86,000
Running heat load	Kcal/Hr	1,17,000
Burner capacity	Kcal/Hr	2,00,000
Circulation blower capacity	M3/Hr	30,500
Number of units	Nos.	1.0



GALLERY



➤ PRE-ASSEMBLY



➤ ANCHOR BOLTS



➤ MILD STEEL
PAINTED
FRAMES

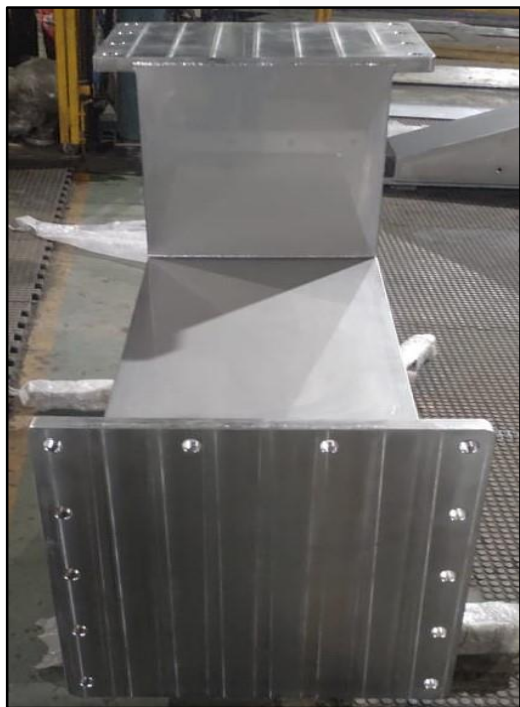


➤ CASTING
BASEPLATES

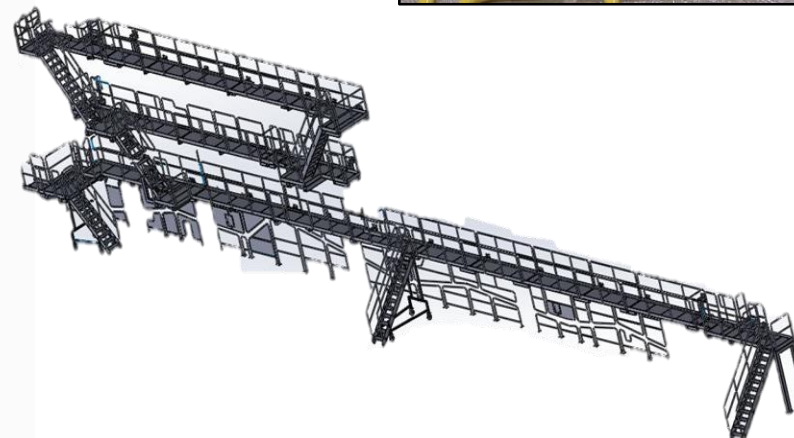


GALLERY

➤ STAINLESS STEEL + CLADDING FRAMES



➤ MS/SS WALKWAYS + GRATINGS





GALLERY



➤ 20 MT CALENDER FRAME



➤ 24 MT SS CLADDED FRAME



GALLERY



➤ LASER CUTTING MACHINE BED



➤ MACHINE BASE



➤ MACHINE STRUCTURE



GALLERY



➤ SS CLADDED BEAMS

➤ SS WALKWAYS

➤ COMPLETE SS ROLLER



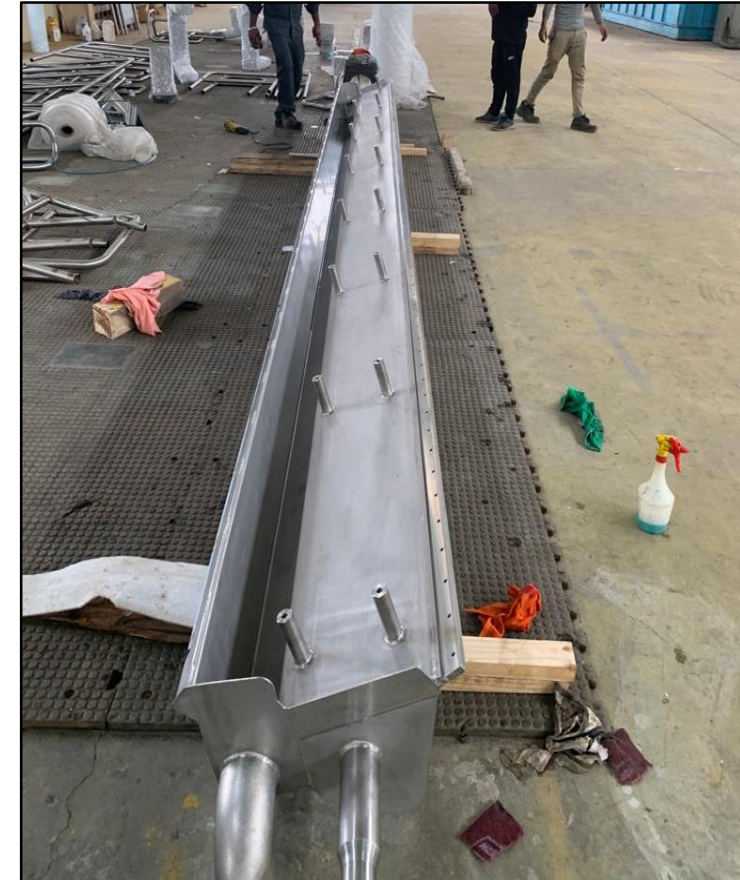
GALLERY



➤ GANTRY 10M BEAMS AND RACKS



GALLERY



➤ COMPLETE SS FABRICATED AND MACHINED JOBS



Aspirations

WE ASPIRE TO EXPAND AND DEVELOP IN SETTING UP MORE PLANTS TO PROVIDE ONE-ROOF SOLUTION TO OUR CUSTOMERS.

Contact Us

enquiry@durgamachtech.com

vaibhav@durgamachtech.com

bhagwant@durgamachtech.com

Mob:-91-8484801111

www.durgamachtechpvtltd.com





THANK YOU